

Plug-In Frequency Mixer

SRA-12+

Level 7 (LO Power +7 dBm) 800 to 1250 MHz

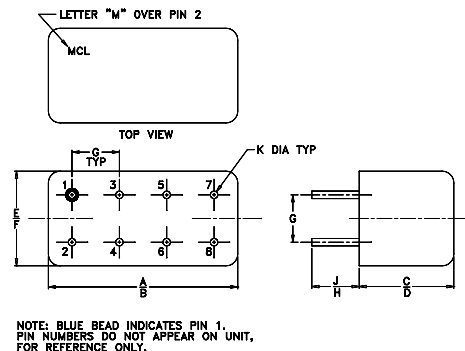
Maximum Ratings

Operating Temperature	-55°C to 100°C
Storage Temperature	-55°C to 100°C
RF Power	50mW
IF Current	40mA

Pin Connections

LO	8
RF	1
IF	3
GROUND	2,5,6,7
CASE GROUND	2,5,6,7
NOT USED	4

Outline Drawing



Outline Dimensions (inch)

A	B	C	D	E	F
.770	.800	.285	.310	.370	.400
19.56	20.32	7.24	7.87	9.40	10.16

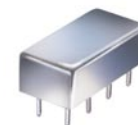
G	H	J	K	wt
.200	.20	.14	.031	grams
5.08	5.08	3.56	0.79	5.2

Features

- excellent conversion loss, 6.21 dB typ.
- good L-R isolation, 35 dB typ. L-I isolation, 30 dB typ.
- rugged welded construction
- hermetic

Applications

- GPS
- cellular
- GSM



CASE STYLE: A06
PRICE: \$34.20 ea. QTY (1-9)

+ RoHS compliant in accordance with EU Directive (2002/95/EC)

The +Suffix has been added in order to identify RoHS Compliance. See our web site for RoHS Compliance methodologies and qualifications.

Electrical Specifications

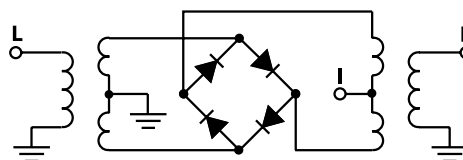
FREQUENCY (MHz)		CONVERSION LOSS (dB)				LO-RF ISOLATION (dB)		LO-IF ISOLATION (dB)	
LO/RF $f_L - f_U$	IF	Mid-Band			Total Range Max.	Typ.	Min.	Typ.	Min.
		\bar{X}	σ	Max.					
800-1250	50-90	6.21	.13	7.5	7.5	35	25	30	20

1 dB COMP.: +1 dBm typ.

Typical Performance Data

Frequency (MHz)		Conversion Loss (dB)	Isolation L-R (dB)	Isolation L-I (dB)	VSWR RF Port (:1)	VSWR LO Port (:1)
RF	LO	LO +7dBm	LO +7dBm	LO +7dBm	LO +7dBm	LO +7dBm
800.00	730.00	6.67	33.42	34.21	2.64	1.93
835.53	765.53	6.56	32.78	33.92	2.58	1.88
871.05	801.05	6.57	32.33	33.41	2.53	1.87
894.72	824.74	6.41	32.16	33.06	2.46	1.84
918.42	848.42	6.31	32.06	32.78	2.43	1.82
942.10	872.10	6.33	32.10	32.59	2.29	1.81
965.79	895.79	6.29	32.20	32.33	2.20	1.79
989.47	919.47	6.18	32.44	32.15	2.13	1.77
1013.20	943.20	6.19	32.61	31.91	2.07	1.77
1036.80	966.80	6.24	33.00	31.84	2.04	1.77
1060.50	990.50	6.23	33.47	31.84	1.94	1.74
1072.40	1002.40	6.34	33.61	31.77	1.89	1.74
1096.10	1026.10	6.39	33.93	31.75	1.84	1.73
1119.70	1049.70	6.52	34.25	31.80	1.78	1.69
1143.40	1073.40	6.67	34.50	31.82	1.76	1.69
1167.10	1097.10	6.77	34.75	31.82	1.73	1.65
1190.80	1120.80	6.90	35.42	32.00	1.71	1.62
1214.50	1144.50	6.95	36.69	32.00	1.73	1.59
1238.20	1168.20	7.04	38.41	33.59	1.73	1.57
1250.00	1180.00	7.00	39.24	34.65	1.75	1.51

Electrical Schematic



Performance Charts

SRA-12+

